

Food Safety in the Supply Chain:

Tanker cleaning, a missing link.





Hans Brinker

Tankcleaning is a CCP

Your food ingrediënt comes into direct contact with the transport tanker.



Liability

Cleaning Station

- Deliver an Effort
- No Result responsibilities
- EFTCO conditions

Tank Transporter

- Transport under CM
- Liability Limited art
- Consequential damage limited.

Chapter IV - Liability of the Carrier

Article 17

1. The carrier shall be liable for the total or partial loss of the goods and for damage thereto occurring between the time when he takes over the goods and the time of delivery, as well as for any delay in delivery.
2. The carrier shall, however, be relieved of liability if the loss, damage or delay was caused by the wrongful act or neglect of the claimant, by the instructions of the claimant given otherwise than as the result of a wrongful act or neglect on the part of the carrier, by inherent vice of the goods or through circumstances which the carrier could not avoid and the consequences of which he was unable to prevent.
3. The carrier shall not be relieved of liability by reason of the defective condition of the vehicle used by him in order to perform the carriage, or by reason of the wrongful act or neglect of the person from whom he may have hired the vehicle or of the agents or servants of the latter.
4. Subject to article 18, paragraphs 2 to 5, the carrier shall be relieved of liability when the loss or damage arises from the special risks inherent in one more of the following circumstances:
 - (a) Use of open unsheeted vehicles, when their use has been expressly agreed and specified in the consignment note;
 - (b) The lack of, or defective condition of packing in the case of goods which, by their nature, are liable to wastage or to be damaged when not packed or when not properly packed;
 - (c) Handling, loading, stowage or unloading of the goods by the sender, the consignee or person

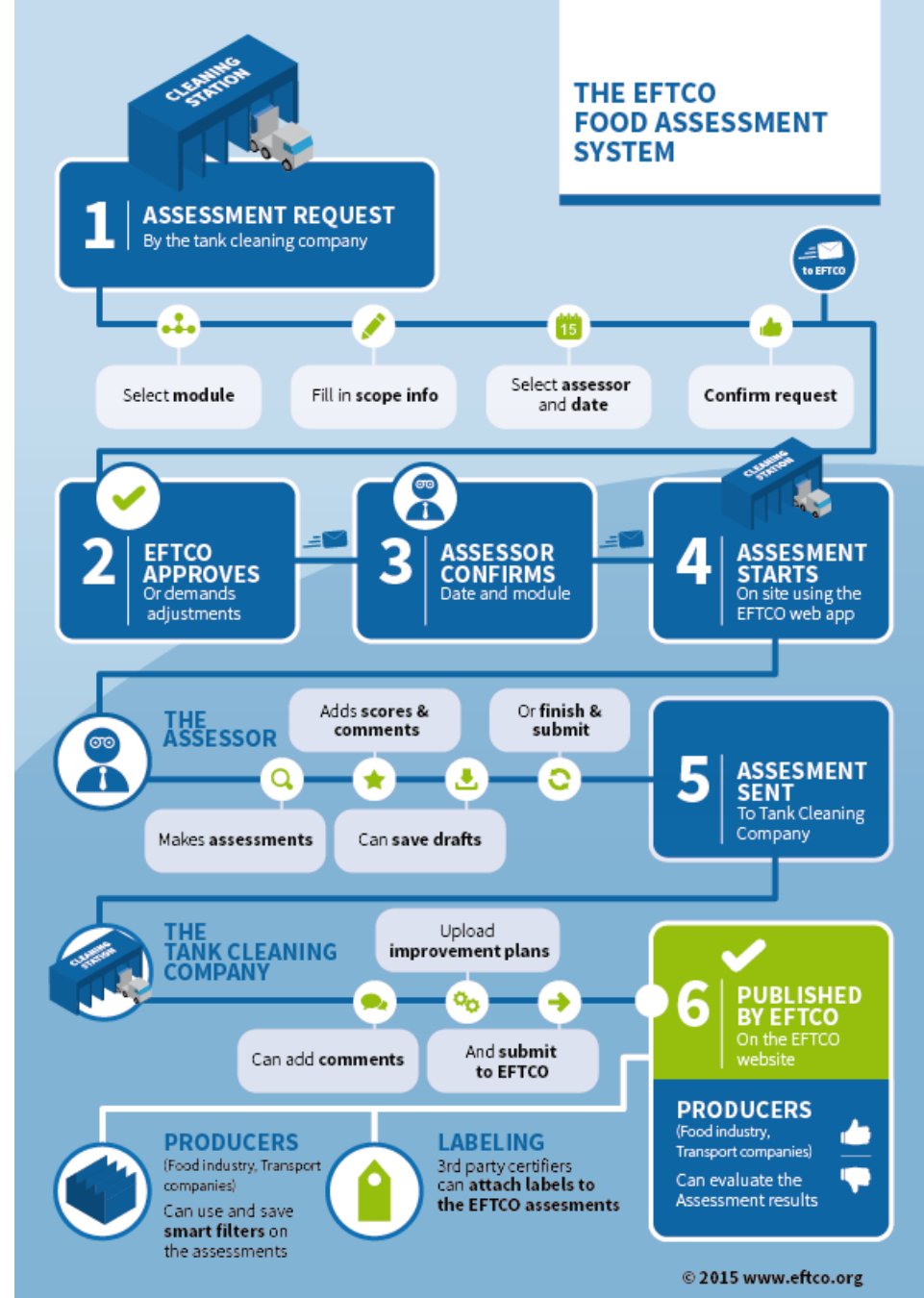
[ECD] Cleaning Certificate, a guarantee ?



EFTCO® www.eftco.org		European Cleaning Document® unique numbering		national logo tank cleaning association	
1					
2 Customer reference number*			3 Serial number		
4 Customer			5 Identification numbers Vehicle Tank, Container		
6			7		

EFTCO FOOD

- Assessment, not certification.
- Difference between ECD Food and ECD.
- It says something about the facility, not about the cleaning process itself



How to clean well ?



Sinner Circle

FSSC22000

Guidance Document Tank Cleaning

- an industrial working group with participants from companies like Mars, Callebaut, Oleonex, Cargill,...
- Detailed guideline how to secure the particular risks of tanker transport and cleaning.
- Process traceability essential.
- Connect with the cleaning stations.

<https://www.fssc.com/wp-content/uploads/2023/03/Guidance-Document-Transport-Tank-Cleaning-V6-2.pdf>



FSSC 22000

**GUIDANCE DOCUMENT: TRANSPORT TANK
CLEANING**

Version 2 | July 2023

FSSC22000

Key Points – FSSC 22000 Tank Cleaning Guidance (V6.2)



- Risk-based cleaning plan required per ISO 22000 & FSSC clause 2.5.10(d)



- Cleanliness verification before loading must go beyond visual checks



- Supplier agreements must define tank cleaning responsibilities.



- Align with ISO/TS 22002-5 for transport and storage PRPs.



- Use scientific verification: process validation per cleaning, swabs, ATP, and audits.



FSSC 22000

GUIDANCE DOCUMENT: TRANSPORT TANK CLEANING

Version 2 | July 2023

Remote Cleaning Process Data Monitoring

→ who can give you
information on the
quality of your specific
tanker cleaning ?

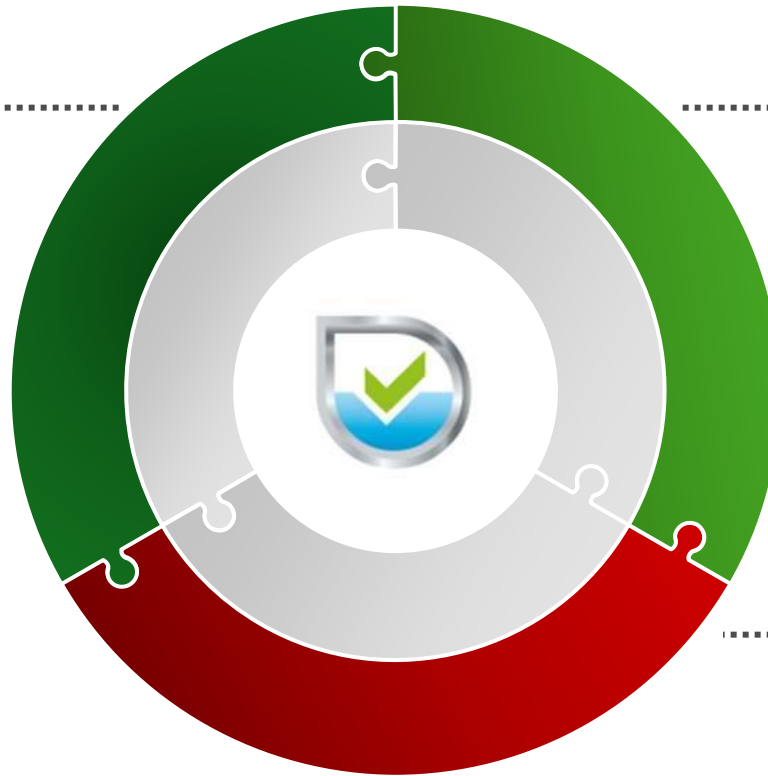


CleanSecure
TANK CLEANING QUALITY MONITORING

**Data
Collection**

**Data
Enrichment**

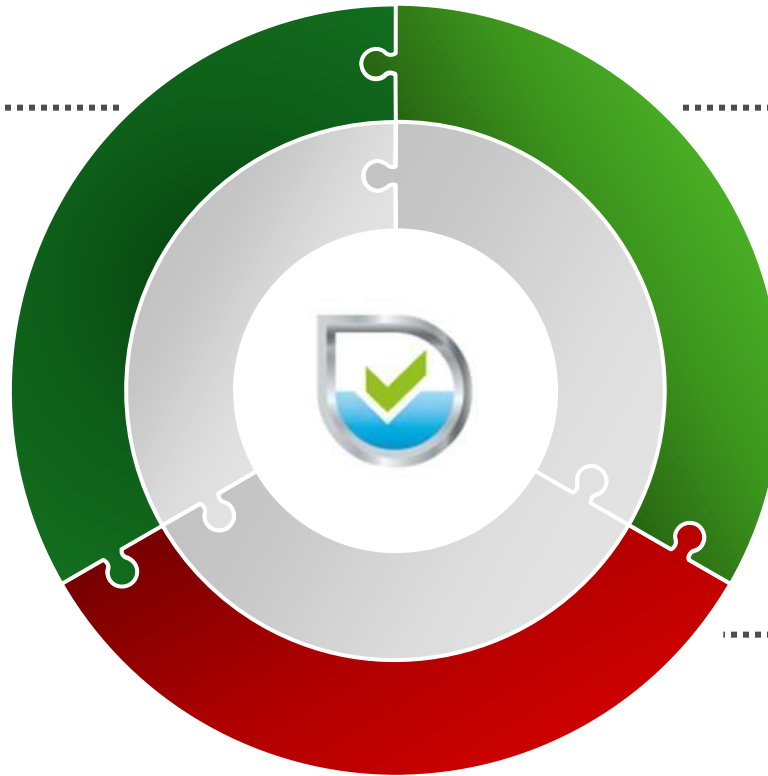
**Data
Distribution**



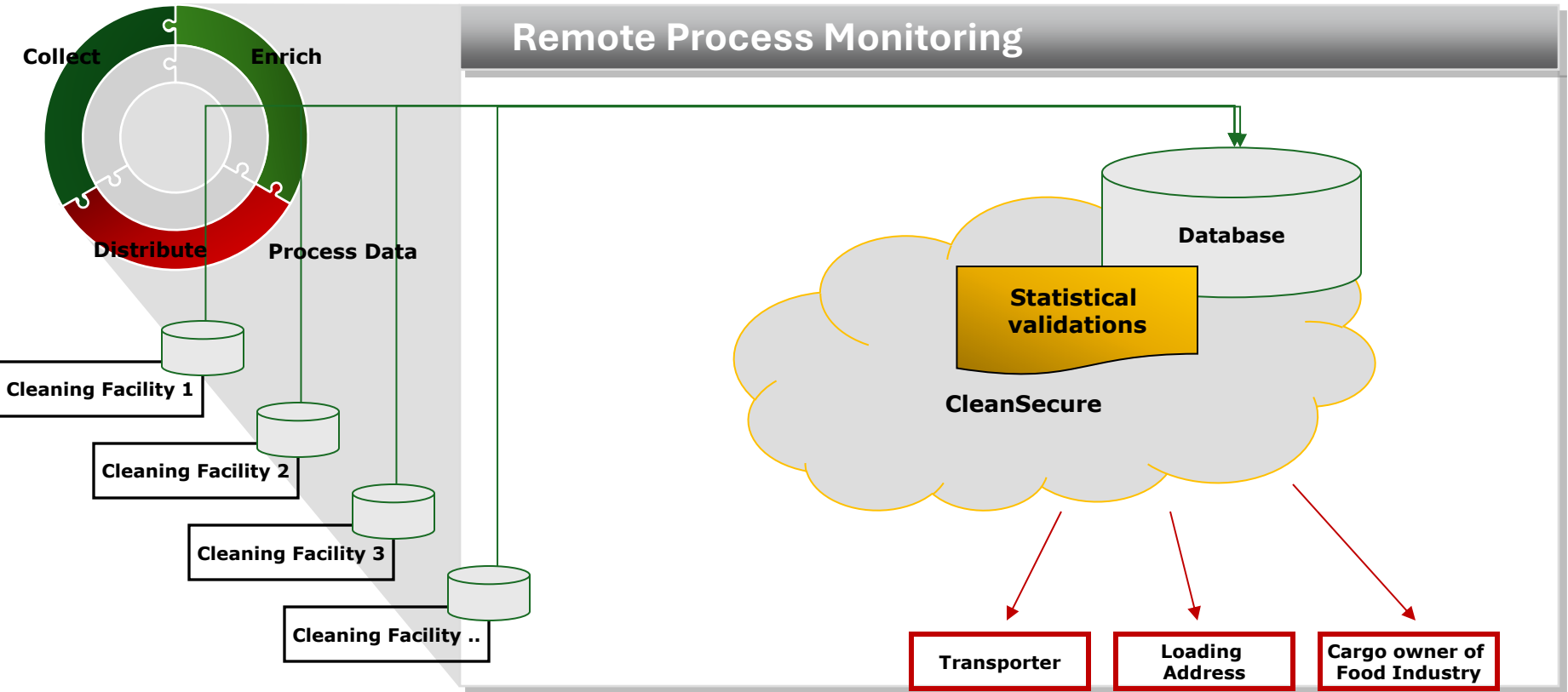
**Data
Collection**

**Data
Enrichment**

**Data
Distribution**



Remote Process Monitoring



CLEANING ORDER REFERENCE309055

Cleaning Order Reference 309055
Tank Registration Number FOTU 125023-3
Transporter Name H&S
Transporter Reference 601398
Cleaning Type Recipe Requested Coca cola



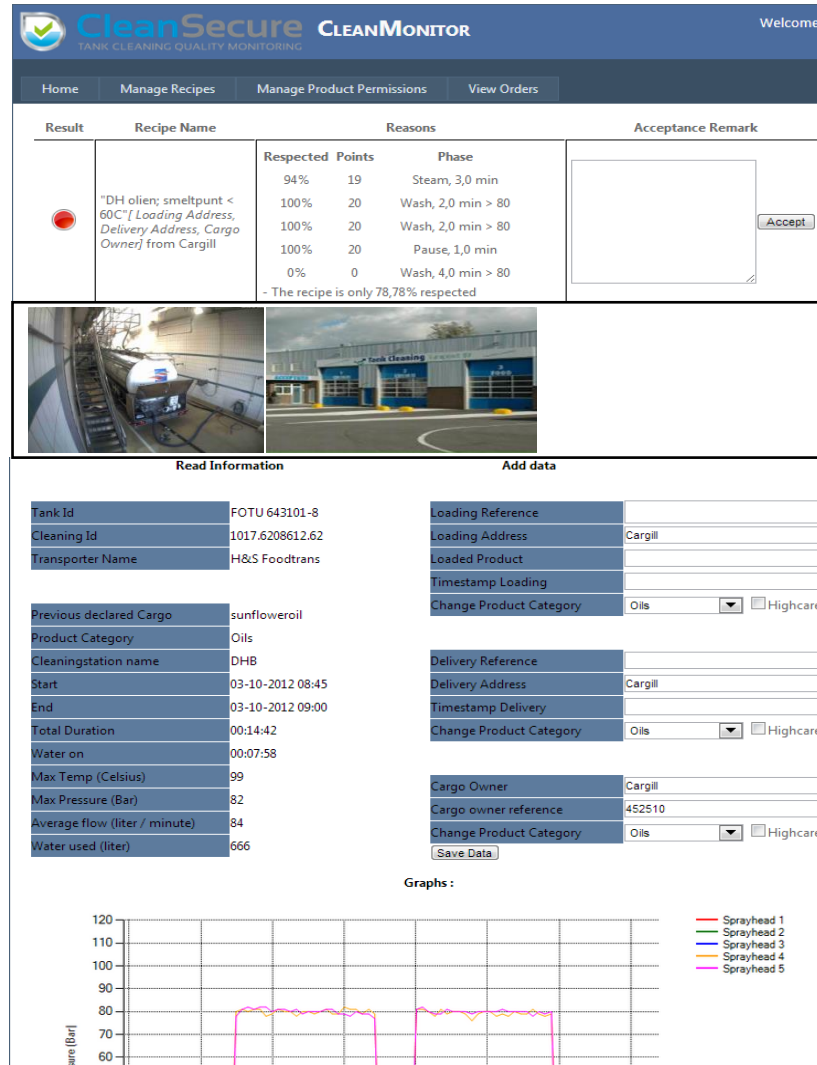
Previous Cargo #1
Previous Cargo #2
Previous Cargo #3

Glucose
Glucose
Glucose

Loading Address Name
Loading Reference
Deliver Reference
Customer Reference
Customer Name

Continental Juice
654328

Process validation



Create the network



CleanSecure
TANK CLEANING QUALITY MONITORING

[Home](#)

[About us](#) ▾

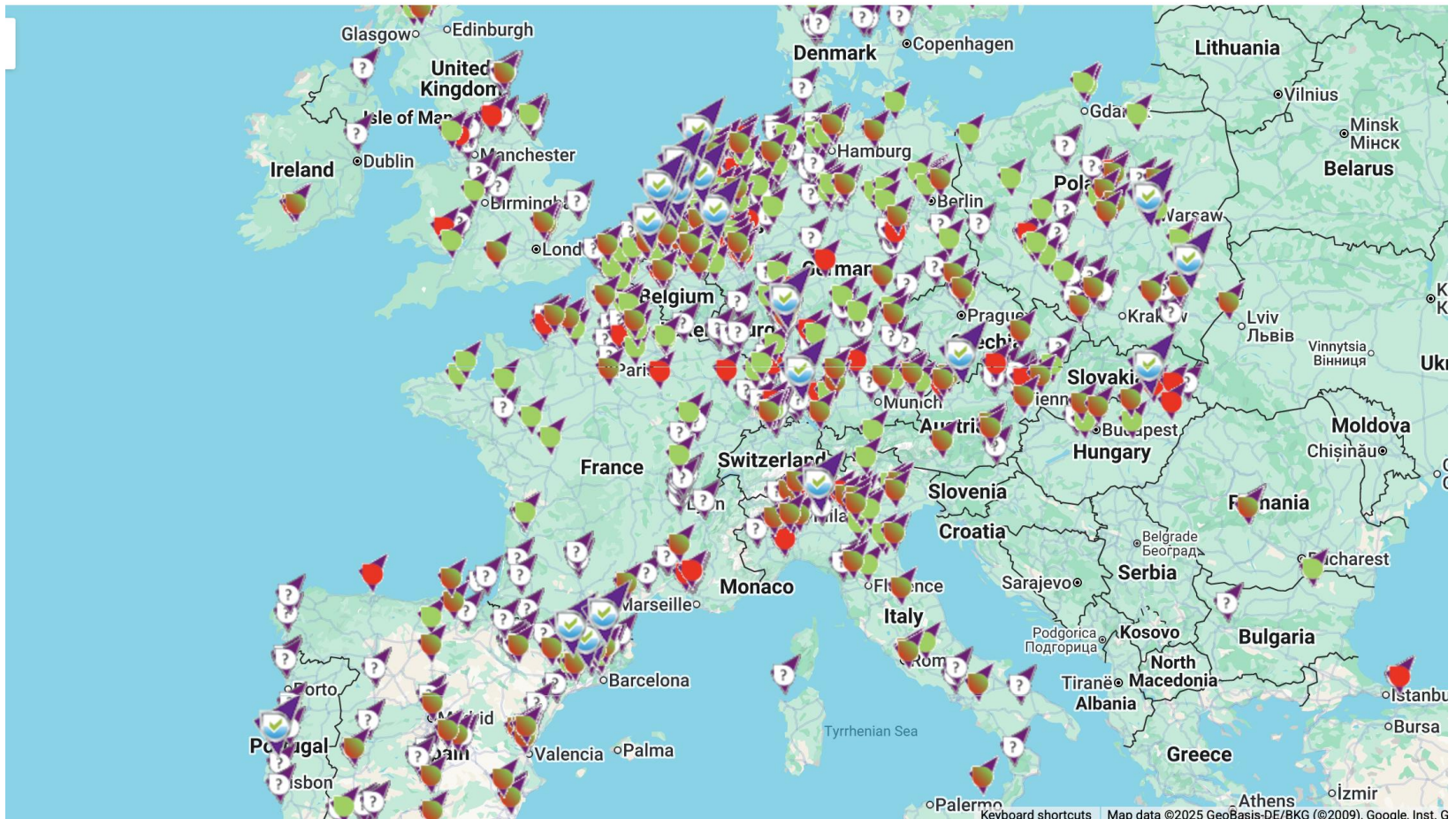
[I am a](#) ▾

[Find a CleaningStation](#)

[News](#)

[Contact](#)

[Monitor](#)



CleanSecure
TANK CLEANING QUALITY MONITORING

